

FastTest®
Your Connection Experts

**PROCESS AND QUALITY
IMPROVEMENT IN THE
REFRIGERATION INDUSTRY**

- **Instant** vacuum, leak or pressure test connections
- **Improve** part throughput & reduce test connection time
- **Reliable** leak tight, uniform connections to a variety of straight, swaged and formed tube profiles

**PRESSURE TESTING
AND PROCESSING**

Refrigeration Tools



www.fastestinc.com

Made in the USA

JNL SERIES & JXL SERIES

Pressure & leak testing copper / soft steel / aluminum tubes



Bores



Straight



Expanded

JNL Series



JNL Series connectors use lever actuation, and unique grip and seal technology to create an internal connection to a variety of tube profiles. The JNL connectors are ideal for sophisticated, high pressure testing applications.

The NuJaws® Advantage

- **Safety design feature** prevents accidental disconnect under pressure
- **Collet design** provides maximum grip pressure with minimal distortion of test piece
- **No adjustments** required by operator
- **Single seal design** allows simple, quick in field maintenance

Common Applications

Heat exchangers | Pressure vessels | HVAC systems | Appliances | Compressors

JXL Series

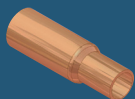


JXL Series connectors use lever actuation, and unique grip and seal technology to create an external connection to a variety of tube profiles. The JXL connectors are ideal for sophisticated, high pressure testing applications that require an external seal.

Technical Specifications

	JXL Series	JNL Series Body Size 0 & 1	JNL Series Body Size 2
Housing Material	Aluminum, stainless steel and delrin		
Seal Material	Buna-N		
Connection Profile	Straight bore, step bore, smooth or cast surfaces		
Termination Profile	Female threads NPT		
Operating Pressure	Vacuum to 1000 psi (69 bar)	Vacuum to 1000 psi (69 bar)	Vacuum to 750 psi (51 bar)
Operating Temperatures	-40°F to +250°F (-40°C to +121°C)		





Swaged

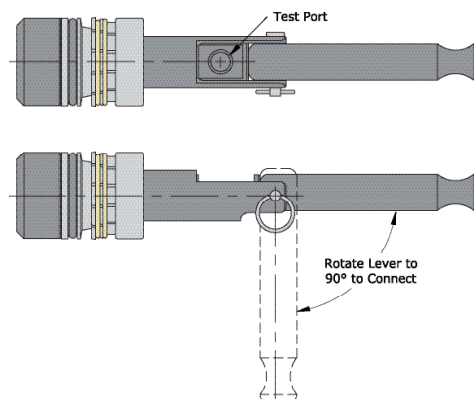
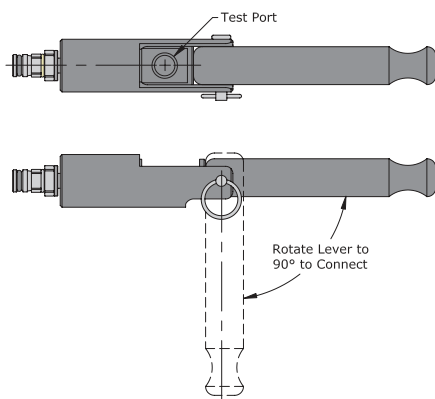
FASTEST "JNL" SERIES - CONNECTORS FOR INTERNAL TUBE GRIP & SEAL APPLICATIONS

JNL0 and JNL1

Part Number	Tube Size (+0.010"/-0.010")	Flow Diameter	Main Seals Package (5)
JNL0-0375H	0.375"	0.11" (2.8)	SN0-0375H
JNL0-0500H	0.500"		SN0-0500H
JNL1-0590	0.590"	0.17" (4.3)	SN1-0590
JNL1-0625	0.625"		SN1-0625
JNL1-0750	0.750"		SN1-0750
JNL1-0785	0.785"		SN1-0785
JNL1-0875	0.875"		SN1-0875

JNL2

Part Number	Tube Size (+0.030"/-0.010")	Flow Diameter	Main Seals Package (5)
JNL2-1000	1.000"	0.17" (4.3)	SN2-100
JNL2-1125	1.125"		SN2-1125
JNL2-1250	1.250"	0.17" (4.3)	SN2-1250
JNL2-1375	1.375"		SN2-1375
JNL2-1500	1.500"	0.17" (4.3)	SN2-1500
JNL2-1625	1.625"		SN2-1625

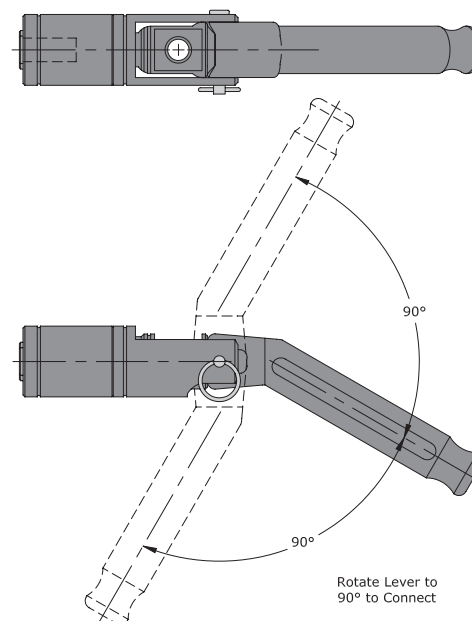


FASTEST "JXL" SERIES - CONNECTORS FOR EXTERNAL TUBE GRIP & SEAL APPLICATIONS

JXL0 and JXL1

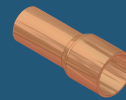
Part Number	Tube Size (± 0.010 ")	Flow Diameter	Main Seals Package (5)
JXL0-0250	0.250"	0.24" (6.0)	SXL0-0250
JXL0-0312	0.312"		SXL0-0312
JXL0-0375	0.375"		SXL0-0375
JXL0-0500	0.500"		SXL0-0500
JXL1-0625	0.625"	0.27" (6.8)	SXL0-0625
JXL1-0750	0.750"		SXL0-0750
JXL1-0875	0.875"		SXL0-0875

Note: Dimensions are in inches (mm).



XT Series & SurConnect XT

Pressure & leak testing formed / expanded tubes



Expanded

XT Series



XT Series connectors use push to connect, sleeve actuation to create an external connection to a variety of formed tubes. The XT connectors are ideal for connecting to expanded tubes, service valves and ball valves.

The XT Advantage

- **Positive gripping** requires no operator adjustments
- **Durable neoprene seals are easily replaced** without tools or disassembly
- **Heat treated steel body** assures long life and protection against mechanical damage

Common Applications

Heat exchangers | Compressors | Refrigeration valves
| Fittings | Pressure vessels | Appliances | Plumbing

Technical Specifications

Operating Pressure	625 psi (43 bar)
Connection Profile	Expanded Tubes
Housing Material	Connector - Steel SurConnect - Aluminum
Seal Material	Neoprene
Operating Temperatures	-40°F to +250°F (-40°C to +121°C)

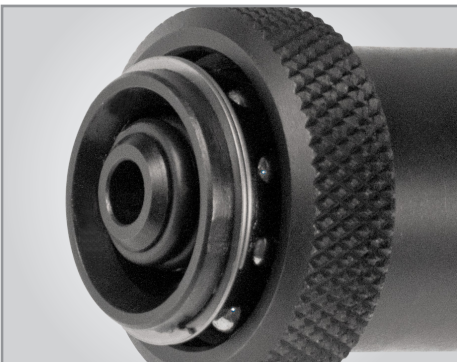
SurConnect XT Series - Positive Connection Indicator

Accessory for the XT - Enhancing safety through a visual indication of a positive connection



The SurConnect Advantage

- **Green ring indicates a secure connection**, improving safety by preventing accidental disconnects.
- **Easily installed on existing XT Connectors** or available fully assembled.
- **Compatible with standard** industry quick connect tips.
- **Color coded by size** for easy recognition.



XT Options



Standard XT Connector



SurConnect XT Kit



XT with SurConnect



XT with SurConnect
& Process Tip

FASTEST "XT SERIES" - CONNECTORS FOR EXTERNAL FORMED / EXPANDED TUBES

XT Part Number	Tube Size	Repair Kit	Main Seals Package (5)	SurConnect Kit Part Number	XT with SurConnect	XT with SurConnect & Process Tip	Process Tip/Nipple	RQD Connector for Process Tip
XT-06042	0.375"	XTR-06	XTB-06	XT06SHR3	XT06042SHR3	XT06042SHR3H4	2K16 (1/4" Hansen)	KA04HB
						XT06042SHR3P4	61-211 (1/4" PCU)	KA04PB
						XT06042SHR3H6	3K21 (3/8" Hansen)	KA06HB
						XT06042SHR3P6	66-311 (3/8" PCU)	KA06PB
XT-08042	0.500"	XTR-08	XTB-08					
XT-10042	0.625"	XTR-10	XTB-10					
XT-12042	0.750"	XTR-12	XTB-12	XT12SHR2	XT12042SHR2	XT12042SHR2H4	2K16 (1/4" Hansen)	KA04HB
						XT12042SHR2P4	61-211 (1/4" PCU)	KA04PB
						XT12042SHR2H6	3K21 (3/8" Hansen)	KA06HB
						XT12042SHR2P6	66-311 (3/8" PCU)	KA06PB
XT-14042	0.875"	XTR-14	XTB-14	XT14SHR1	XT14042SHR1	XT14042SHR1H4	2K16 (1/4" Hansen)	KA04HB
						XT14042SHR1P4	61-211 (1/4" PCU)	KA04PB
						XT14042SHR1H6	3K21 (3/8" Hansen)	KA06HB
						XT14042SHR1P6	66-311 (3/8" PCU)	KA06PB

Note: FasTest RQD Connectors are designed to mate with **ISO 7241-1 Series B (ISO-B) Interchange Quick Disconnect Nipples** (Process Tips) commonly known as "60 Series Couplings".

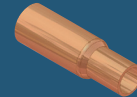
Note: FasTest's RQD Connectors are able to mate with, but are not limited to, the following brands: Parker 60, PCU Series 250 & 410, Hansen HK, SABE IB Series (China), AeroQuip FD45, Faster HNV Series, Snap-Tite 72 Series, Stucchi IRB, Perfecting H Series, Safeway S10 Series, Tomco H Series, Cejn X75, Foster HX-S & Nitto 250

ST Series

Pressure & leak testing straight / swaged tubes



Straight



Swaged

ST Series



ST Series connectors use sleeve actuation to create an external connection to a variety of straight and swaged tubes. The ST connectors are ideal for connecting to straight and swaged tubes when connection space is limited.

The ST Advantage

- **Reliable sealing** reduced test errors and minimizes production losses
- **Durable, replaceable** neoprene seals
- **Heat treated steel body** assures long life and protection against mechanical damage
- **Positive gripping** - No operator adjustments!

Common Applications

Manifolds | Tubes | Coils | Compressors | Fittings
| Engines | Pressure vessels | Appliances | Ice machines | Refrigerators | Split systems

Technical Specifications

Operating Pressure	1000 psi (69 bar)
Connection Profile	Straight and swaged tubes
Housing Material	Heat treated steel
Seal Material	Neoprene
Operating Temperatures	-40°F to +250°F (-40°C to +121°C)



FASTEST "ST SERIES" - CONNECTORS FOR EXTERNAL STRAIGHT / SWAGED TUBES

Part Number	Tube Size (+0.015"/-0.010")	Insertion Depth (mm)	Replacement Collet Sets	Main Seals Package (5)
ST-04042	0.250"	0.62" (15.8)	STC-04	STB-04
ST-05042	0.312"		STC-05	STB-05
ST-06042	0.375"	0.75" (19.1)	STC-06	STB-06

EZ Connect ZGX

Pressure & leak testing expanded / straight tubes



Straight



Expanded

EZ Connect ZGX



EZ Connect ZGX connectors use lever actuation, external gripping and internal sealing to create a connection to expanded and straightened tubes. The ZGX connectors are ideal for low pressure applications that allow for operator adjustment to accommodate variation in tube sizes.

The EZ Connect Advantage

- **Simple adjustment** - Twist to adjust collar is easily sized to accommodate tube tolerances and seal wear
- **Pressure assisted grip and seal** design delivers improved sealing as pressure increases
- **High flow design** can be quickly adapted for plug style applications

Common Applications

Evaporator coils | Tubing | Sub assemblies |
Refrigerant compressors | HVAC-R filters | Valves

Technical Specifications

Operating Pressure	500 psi (34.4 bar)
Connection Profile	Expanded and straight tubes
Housing Material	Aluminum, stainless steel components, molded nylon handle
Seal Material	Neoprene
Operating Temperatures	-40°F to +250°F (-40°C to +121°C)



FASTEST "ZGX SERIES" - CONNECTORS FOR EXTERNAL EXPANDED / STRAIGHT TUBES

Part Number	Tube Type	Nominal ID	Nominal OD	Term. Port	Flow Diameter	Maintenance Kit
ZGX-137501	3/8" Expanded	0.330"-0.394"	0.400"-0.475"	1/8" NPT	0.10"	ZGXB1-0360
ZGX-150012	1/2" Expanded	0.472"-0.551"	0.545"-0.600"	1/8" NPT	0.20"	ZGXB1-12
ZGX-255513	5/8" Straight	0.551"-0.630"	0.595"-0.650"	1/4" NPT	0.20"	ZGXB2-13
ZGX-262521	5/8" Expanded	0.630"-0.709"	0.650"-0.725"	1/4" NPT	0.20"	ZGXB2-21
ZGX-266621	3/4" Straight	0.630"-0.709"	0.665"-0.755"	1/4" NPT	0.20"	ZGXB2-21
ZGX-275022	3/4" Expanded	0.709"-0.787"	0.775"-0.855"	1/4" NPT	0.20"	ZGXB2-22
ZGX-278523	7/8" Straight	0.787"-0.866"	0.835"-0.915"	1/4" NPT	0.20"	ZGXB2-23
ZGX-287531	7/8" Expanded	0.866"-0.945"	0.900"-0.980"	1/4" NPT	0.26"	ZGXB2-31

Note: EZ Connect ZGX maintenance kits come with five main seal sets and five internal seals and washers

Visit www.fastestinc.com

About FasTest?

Since 1985, FasTest has been providing problem-solving solutions to meet the specific testing requirements of quality conscious manufacturers. Our customers produce a wide range of products, from micro-medical components to heavy-duty hydraulic equipment. Products you see every day like faucets, air conditioners, automobiles and aircraft.

How to Buy

FasTest offers a wide range of standard connectors as well as custom solutions to meet your application requirements. **To obtain a part number or a price quotation:**

1. Contact your local **FasTest** partner with details regarding your application. Visit: www.fastestinc.com/en/distributorlocator
2. Visit www.fastestinc.com for product information or to make a purchase
3. Contact customer service for additional pricing information or custom solutions

Learn More

See the Products in Action

Visit www.fastestinc.com and view demonstrations and product videos

PROUDLY SERVING



FasTest®

Your Connection Experts

Headquarters in USA

1646 Terrace Drive • Roseville, MN 55113-1317

Phone: +1.651.645.6266

Fax: +1.651.645.7390

www.fastestinc.com

Asia Office in Hong Kong

+852.2886.1650 • asia@fastestinc.com



Valley International Supply

1474 W. Price Rd. Ste 107

Brownsville, Texas 78520

Phone 956.592.1927

www.valleyintlsupply.com

Notifications and Copyright

Specifications in this brochure are subject to change without notice. FasTest also reserves the right to make modifications and makes no guarantee of the accuracy of the information contained herein.

FasTest is a registered trademark with the US Patent & Trademark Office.

© 2016 FasTest Inc. All rights reserved.

No part of this publication may be reproduced without written permission.

Patents

FasTest Inc. takes pride in its innovative quick disconnect coupling solutions, many of which have been awarded United States and International patents. FasTest Inc. has a strong tradition of leadership in the quick disconnect market, and aggressively pursues and protects its proprietary information and intellectual property.

All products are designed and manufactured by Fastest Inc. USA

Limited Express Warranty

FasTest Inc. warrants its products against defects in workmanship and materials for 12 months from the date of sale by FasTest Inc. or its authorized distributor. This warranty is void if the product is misused, tampered with or used in a manner that is contrary to FasTest Inc.'s written recommendations and/or instructions.

See website for complete warranty information.

Custom Applications

FasTest has full engineering and manufacturing capability to provide special accommodations to meet specific applications. Our engineers are available to review your unique application requirements.

Certifications

FasTest Inc. is ISO 9001: 2008 certified.